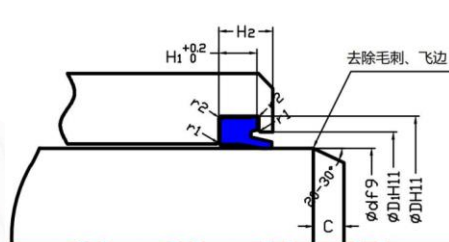
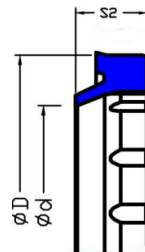


# WR-02E

## 单作用低阻防尘



$r1 \leq 0.3$   
 $r2 \leq 0.5$

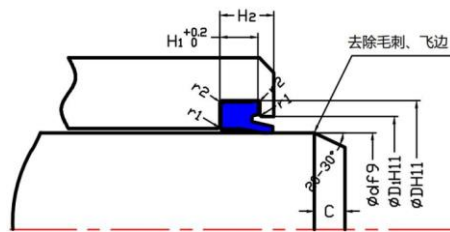


材料:	PU-15594
硬度:	HA 93
TR-10:	-42°C
最高使用温度:	100°C
速度:	0.03~0.5m/s
工作介质:	液压油、水、醇类

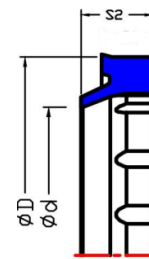
- 活塞杆表面应进行 $0.1 \sim 0.4 \mu\text{mRa}$ 的抛光
- 内部采用“加强筋”设计，可避免因防尘圈根部将活塞杆干摩擦导致的异响。
- 外径方向增加“防水台”有效避免水汽从沟槽进入液压缸内部。

d(mm)	D(mm)	D2(mm)	H1(mm)	H2(mm)	S2(mm)
16	24	20.3	5	7	6
18	26	22.3	5	7	6
20	28	24	6	6.85	6.85
20	28	24	5	8	6
20	28.6	23	5.3	7	7
22	30.6	25	5.3	7	7
25	33	29	5	8	6
25	33.6	28	5.3	7	7
28	36	32	5	8	6
28	36.6	31	5.3	7	7
30	38	34	6	8	6.5
30	38.6	33	5.3	7	7
30	42	36	5	8	8
31.5	39.5	35.5	6	8	6.5
32	40.6	35	5.3	7	7
35	43	39	6	8	6.5
35	43.6	38	5.3	7	7
35	47	41	5	8	8
35.5	43.5	39.5	6	8	6.5
36	44.6	39	5.3	7	7
38	46.6	41	5.3	7	7
40	48	44	6	8	6.5
40	48	44	6	8	6.5
40	48.6	43	5.3	7	7
40	52	46	5	8	8
42	50.6	45	5.3	7	7
45	53	49	6	8	6.5
45	53.6	48	5.3	7	7
45	55.6	48	5.3	7	7
45	57	51	5	8	8

d(mm)	D(mm)	D2(mm)	H1(mm)	H2(mm)	S2(mm)
50	58	54	6	8	6.5
50	58.6	53	5.3	7	7
50	60.6	53	5.3	7	7
50	62	56	5	8	8
53	61	57	6	8	6.5
55	63	59	6	8	6.5
55	63.6	58	5.3	7	7
55	65.6	58	5.3	7	7
55	69	62	6	9.5	9.5
56	64	60	6	8	6.5
56	64.6	59	5.3	7	7
56	66.6	59	5.3	7	7
60	68	64	6	8	6.5
60	68.6	63	5.3	7	7
60	70.6	63	5.3	7	7
60	74	67	6	9.5	9.5
62	70	66	6	8	6.5
63	71	67	6	8	6.5
63	77	70	6	9.5	9.5
65	73	69	6	8	6.5
70	78.6	73	5.3	7	7
70	80	75	7	10	8
70	80.6	73	5.3	7	7
70	84	77	6	9.5	9.5
75	85	80	7	10	8
75	88.6	80	6	10.5	9
76	86	81	7	8	8
80	88.6	83	5.3	7	7
80	90	85	7	10	8
80	92.2	86	7.1	12	12

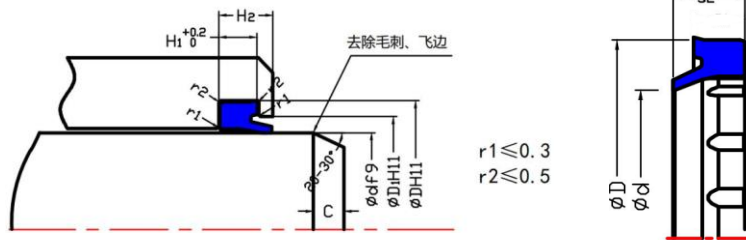


$r1 \leq 0.3$   
 $r2 \leq 0.5$



d(mm)	D(mm)	D2(mm)	H1(mm)	H2(mm)	S2(mm)
80	94	87	6	9.5	9.5
85	93.6	88	5.3	7	7
85	95	90	7	10	8
85	97.2	91	7.1	12	12
90	100	95	7	10	8
90	102.2	96	7.1	12	12
90	104	97	6	9.5	9.5
95	105	100	7	10	8
100	110	105	7	10	8
100	112.2	106	7.1	12	12
105	115	110	7	10	8
110	120	115	7	10	8
110	122.2	116	7.1	12	12
110	126	118	7	11	11
120	130	125	7	10	8
125	138	132	8	12	9.5
130	143	137	8	12	9.5
132	145	139	8	12	9.5
135	147.2	141	7.1	12	12
140	153	147	8	12	9.5
145	158	152	8	12	9.5
150	163	157	8	12	9.5
155	168	162	8	12	9.5
160	173	167	8	12	9.5

英制尺寸 (INCH)				
d(in)	D(in)	D2(in)	H1(in)	H2(in)
0.375	0.625	0.540	0.125	0.187
0.500	0.750	0.665	0.125	0.187
0.563	0.844	0.736	0.125	0.187
0.625	0.875	0.790	0.125	0.187
0.750	1.125	1.000	0.187	0.281
0.875	1.250	1.125	0.187	0.281
1.000	1.375	1.250	0.187	0.281
1.125	1.500	1.375	0.187	0.281
1.187	1.562	1.437	0.187	0.281
1.250	1.625	1.500	0.187	0.281
1.375	1.750	1.625	0.187	0.281
1.500	1.875	1.750	0.187	0.281
1.625	2.000	1.875	0.187	0.281
1.750	2.125	2.000	0.187	0.281
1.875	2.250	2.125	0.187	0.281
2.000	2.500	2.332	0.250	0.375
2.250	2.750	2.582	0.250	0.375
2.375	2.875	2.707	0.250	0.375
2.500	3.000	2.832	0.250	0.375
2.625	3.125	2.957	0.250	0.375
2.750	3.250	3.082	0.250	0.375
3.000	3.500	3.332	0.250	0.375
3.250	3.750	3.582	0.250	0.375
3.500	4.000	3.832	0.250	0.375
3.750	4.250	4.082	0.250	0.375
3.875	4.375	4.207	0.250	0.375
4.000	4.500	4.332	0.250	0.375
4.250	4.750	4.582	0.250	0.375
4.500	5.000	4.832	0.250	0.375
4.500	5.250	4.998	0.375	0.562
4.750	5.500	5.248	0.375	0.562
4.875	5.625	5.373	0.375	0.562
5.000	5.500	5.332	0.250	0.375
5.000	5.750	5.498	0.375	0.562
5.250	6.000	5.748	0.375	0.562
5.500	6.250	5.998	0.375	0.562
5.750	6.500	6.248	0.375	0.562
5.875	6.625	6.373	0.375	0.562
6.000	6.500	6.332	0.250	0.375
6.000	6.750	6.498	0.375	0.562
6.500	7.250	6.998	0.375	0.562



英制尺寸 (INCH)				
d(in)	D(in)	D2(in)	H1(in)	H2(in)
7.000	7.500	7.332	0.250	0.375
7.000	7.750	7.498	0.375	0.562
7.500	8.250	7.998	0.375	0.562
8.000	8.750	8.498	0.375	0.562
8.125	8.625	8.457	0.250	0.375
8.250	9.000	8.748	0.375	0.562
8.500	9.250	8.998	0.375	0.562
9.000	9.750	9.498	0.375	0.562
9.375	9.875	9.707	0.250	0.375
9.500	10.250	9.998	0.375	0.562
10.000	11.000	10.664	0.500	0.750
11.000	11.750	11.498	0.375	0.562
11.000	12.000	11.664	0.500	0.750
12.000	13.000	12.664	0.500	0.750
14.000	15.000	14.664	0.500	0.750
15.000	16.000	15.664	0.500	0.750